

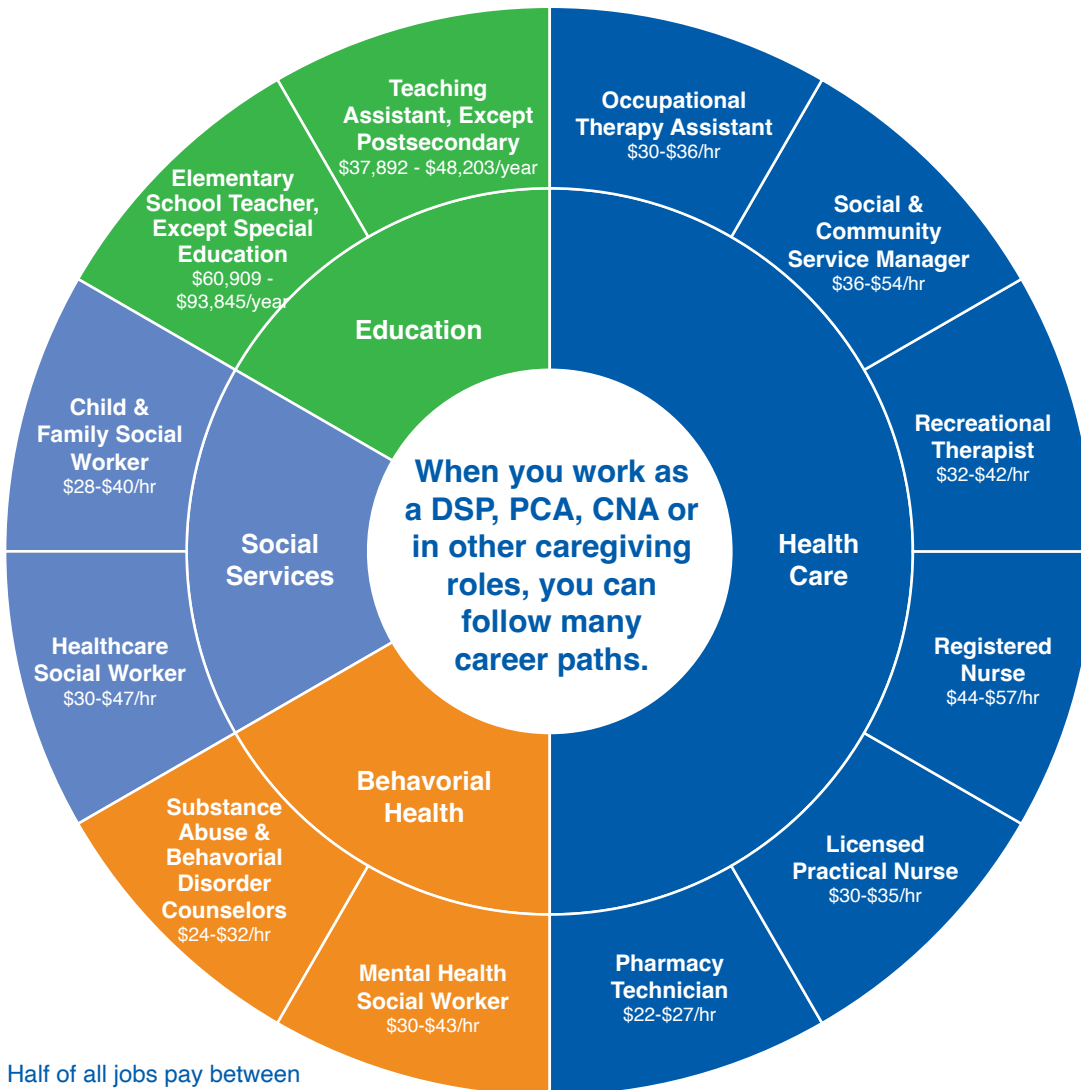
Follow Your Heart to a Caring Career

There are many career pathways you can follow!



In addition to the personal rewards of working in home care, community services or residential care, the work experience can be helpful when applying for other health care, behavioral health, education or social service positions.

When you work as a Direct Support Professional (DSP), Personal Care Aide (PCA), Nursing Assistant (CNA) or in other caregiving roles, you gain skills that are valuable on many related career paths.



To help yourself reach your career goals, please make sure you:

- Understand the experience and training requirements necessary for your career goal. You might need to work with certain populations or do certain caregiving tasks to qualify for other positions.
- Maintain detailed records of trainings you receive while you are working in any caring career occupation. Note the:
 - Training content
 - Credentials of the trainer(s)
 - Number of hours trained
 - Certificates you received
- Maintain detailed records of the:
 - Number of hours you worked/ number of hours of support you provided
 - Types of diagnoses you support. For example, some jobs might require a certain amount of experience in supporting people with substance use disorders.
- Make sure you do NOT record client personal information that would violate client privacy rights.

Half of all jobs pay between the 25th and 75th wage percentile, so that is the wage range reflected in the chart above.



Find out more at CareerForce.MN.gov/CaringCareer



Minnesota's Career Resource