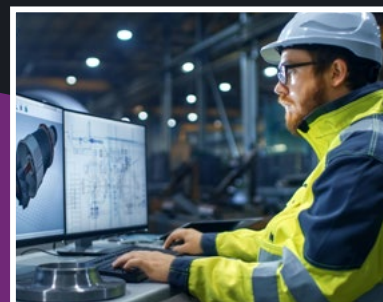


LAI D OFF?

WE CAN HELP



MINNESOTA'S
DISLOCATED
WORKER
PROGRAM





GETTING HELP IN HARD TIMES

Many workers who lose a job through no fault of their own may need some help returning to work. Finding a job under these circumstances can be stressful and overwhelming.

Minnesota's Dislocated Worker program offers free services to help eligible individuals find suitable reemployment and take the stress and uncertainty out of the process. Services are tailored to address an individual's specific needs.

Individuals may be eligible for this program if they are:

- Laid off, through no fault of their own
- Are eligible for Unemployment Insurance or exhausted Unemployment Insurance
- May need help finding suitable employment quickly

Through our statewide network of Dislocated Worker program providers and key partner organizations, we offer a variety of services that focus on preparing you to find a suitable new job at comparable wages.

TABLE OF CONTENTS

Dislocated Worker Program Contacts	2
Group Information Meeting Agenda	3
Unemployment Insurance	4-5
Dislocated Worker Program.	6-7
Helpful Web Resources.	8-9
Enrolling in Health Insurance Through MNsure.	10-12
Dislocated Worker Program — FAQs.	13-14
Training FAQs	15-16





EMPLOYMENT AND ECONOMIC DEVELOPMENT

STATE RAPID RESPONSE TEAM

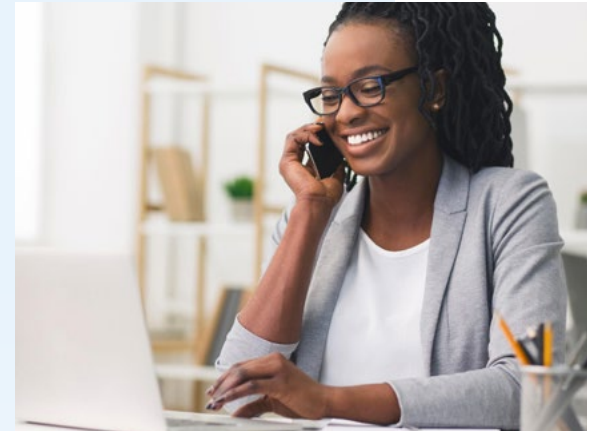
DISLOCATED WORKER PROGRAM INFORMATION LINE

Telephone: 651-259-7537

Toll Free (in greater MN): 866-213-1422

TTY: 651-296-3900

Email: deed.dw@state.mn.us



MAILING ADDRESS:

Minnesota Department of
Employment and Economic Development
Dislocated Worker Program
Great Northern Building
108 5th St East
St Paul, MN 55101

WEB ADDRESS:

<https://CareerForce.MN.gov/dislocatedworker>



GROUP INFORMATION MEETING AGENDA

UNEMPLOYMENT INSURANCE BENEFITS OVERVIEW

- When to apply
- How to apply
- How much to expect in benefits

DISLOCATED WORKER PROGRAM OVERVIEW

- Goal of program:
Suitable re-employment as soon as possible
- When can I start using this program?
- Dislocated Worker Program benefits
 - Career planning and counseling
 - Job search assistance
 - Counselor-approved training
 - Support services
- Rapid Response Survey
To determine general needs and profile of the affected workers.
- Planning and Selection Committee
Includes seven to nine worker volunteers who help plan, deliver and evaluate transition services and communicate Dislocated Worker information to their co-workers.

HELPFUL RESOURCES

MNSURE HEALTH INSURANCE



UNEMPLOYMENT INSURANCE

The Unemployment Insurance Program provides a temporary, partial wage replacement while you look for work or take part in approved training to prepare for your next career.

These benefits help take away some of the worry that comes with losing a paycheck and give you some time to find or prepare for your next career.

WHEN TO APPLY:

You should apply for benefits after your last day of work or your hours have been greatly reduced.

HOW TO APPLY:

You can apply online using our mobile-friendly website by visiting www.uimn.org, or by calling our Customer Service Center.

HOW DOES GOING TO SCHOOL AFFECT MY BENEFITS

If you are in a full-time training program approved by the Dislocated Worker Program, attending classes and making satisfactory progress replaces the work search requirement for unemployment benefits. Attending an approved training does not extend the amount or length of your Unemployment Insurance benefits.



UNEMPLOYMENT INSURANCE (CONTINUED)

For information about Unemployment Insurance in Minnesota go to www.uimn.org

On this site you will find information and videos about the following Unemployment Insurance topics:

- What do I need to know?
- How do I apply?
- How do I get paid?
- What affects my benefits?
- How do I appeal?



CUSTOMER SERVICE CENTER

We're here to help. Call us if you have questions or want to apply for benefits by phone.

Monday — Friday

8:00 a.m. to 4:30 p.m.

Twin Cities area: 651-296-3644

Greater Minnesota: 1-877-898-9090

TTY for the hearing impaired: 1-866-814-1252

Select a language: *English, Spanish, Hmong, or Somali*. For another language, follow the prompts to speak to a Customer Service Representative and request an interpreter for your preferred language. The representative will add an interpreter to the phone call.

DISLOCATED WORKER PROGRAM

LAID OFF? WE CAN HELP.

Workers who are unemployed or about to become unemployed may be eligible for services from Minnesota's Dislocated Worker program.

FREE services are available for workers who:

- Are laid off, through no fault of their own
- Are eligible for Unemployment Insurance or exhausted Unemployment Insurance
- May need help finding suitable employment quickly



WHAT'S IN IT FOR ME?

Career planning and counseling

- Advice on making career decisions and developing job goals
- Personal planning
- Assessment tools

Job search assistance

- Workshops on preparing cover letters and resumes, interviewing and networking
- Finding 'hidden' jobs
- Job clubs

Counselor-approved training

- Education advancement like a GED
- Workplace effectiveness skills
- Short-term training to brush up skills or get a new certification
- Long-term training for new skills in a new field

Support services

- Limited funds are available for expenses such as transportation or family care to help you achieve employment or training goals

DISLOCATED WORKER PROGRAM (CONTINUED)

WHAT'S NEXT?

Information meetings with workers

Group Information Sessions are held to explain the program, recruit volunteers to serve on a Planning and Selection Committee (PSC), and complete a brief survey that helps us understand the needs and concerns of the group as a whole.

Planning and Selection Committee (PSC) meetings (1–3)

A committee of workers is formed to represent the needs of the affected workers and to choose a service provider who can best meet those needs. This committee represents all workers in the company. Its purpose

is to interview and select a service provider who can best meet the needs of the group. The committee also acts as a liaison between the service provider and the affected workers. They work with the provider to plan the first steps of service delivery.

Project grant submitted and approved

Services of the Dislocated Worker program can usually begin within 24 hours after they are selected by the committee. The service provider can receive a grant from the State of Minnesota which will be used for training and support services for the group of laid-off employees.

HOW DO I APPLY?

If a minimum of 50 individuals, who have also been laid off from your company express interest in accessing the Dislocated Worker program's services, our team will coordinate with the Planning and Selection Committee to choose a dedicated service provider for you. Together with the selected provider, we will proactively reach out to connect you with their services.



HELPFUL WEB RESOURCES

HELPFUL WEB RESOURCES			
#	RESOURCE NAME	WEB LINK	PHONE NUMBER
1	DISLOCATED WORKER PROGRAM – If you're a worker who has been laid off (or notified that a layoff is coming) through no fault of your own, we offer services at no cost that focus on preparing you to find a suitable new job.	CareerForce.MN.gov/ dislocatedworker	651-259-7537
2	UNEMPLOYMENT INSURANCE (UI) – Your only stop for Minnesota Unemployment benefit information. <hr/> Eight UI videos on applying for benefits, benefit payments, help with password, etc.	www.uimn.org <hr/> www.uimn.org/uimn/applicants/ videos	Twin Cities: 651-296-3644 Greater MN: 877-898-9090 Teletypewriter (TTY) users: 866-814-1252
3	CAREERFORCE – Find contact information and the address for a CareerForce location near you where you can use a computer, printer or fax machine for your job search, also find free workshops on career exploration and job search topics, learn about job clubs and other networking groups and get connected with employers near you hiring now.	CareerForce.MN.gov/locations CareerForce.MN.gov/events CareerForce.MN.gov	651-259-7500
4	TRADE ADJUSTMENT ASSISTANCE – Check if your business or employment is affected by Trade Adjustment Act.	www.doleta.gov/tradeact www.mn.gov/deed/applytaa	202-693-3560 651-259-7543 or 1-888-234-1330
5	VETERANS ASSISTANCE – Are you a veteran? Get connected to special employment services available to Minnesota's veterans.	CareerForce.MN.gov/veterans- resources CareerForce.MN.gov/ MilitarySkillsTranslator	651-259-7500
6	CREATIVE JOB SEARCH GUIDE – Essential ingredients of a successful job search including identifying your skills, resumes and cover letters, job interviews, internet & social media, how to find work, etc.	CareerForce.MN.gov/ CreativeJobSearch	651-259-7500
7	MINNESOTAWORKS.NET – The premier no-fee job bank for Minnesota job seekers and employers. Create a profile, post up to five resumes and search for jobs.	www.minnesotaworks.net	651-259-7500
8	MINNESOTA STATE COLLEGES & UNIVERSITIES – Search for academic programs in the MN system	https://apps.deed.state.mn.us/ lmi/cpt/EducationSearch	1-800-456-8519

HELPFUL WEB RESOURCES (CONTINUED)

HELPFUL WEB RESOURCES			
#	RESOURCE NAME	WEB LINK	PHONE NUMBER
9	APPRENTICESHIP — Apprenticeship is a formal system of employee training that combines on-the-job training with related technical instruction.	https://www.dli.mn.gov/business/workforce/be-apprentice	651-284-5005 or 1-800-342-5354
	Apprenticeship training programs by county — see what companies offer apprenticeships in what occupations.	secure.doli.state.mn.us/apprenticeshipsponsor	
10	CONVERTING LAYOFFS INTO MINNESOTA BUSINESSES (CLIMB) —	CareerForce.MN.gov/CLIMB	651-259-7500
11	STATE OF MINNESOTA JOBS —	www.mn.gov/careers	
12	FEDERAL JOBS —	www.usajobs.gov	
13	UNITED WAY — United Way has a team of compassionate, highly trained community specialists who are available to help you access the best local resources and services to address any need.	www.211.org	211
14	PUBLIC BENEFITS — Determine possible eligibility for public health care, child care, tax credits, food support and energy assistance.	www.bridgetobenefits.org	651-227-6121
		www.fareforall.org	763-450-3880
15	HUNGER SOLUTIONS — As the only statewide anti-hunger organization whose services reach every county of Minnesota, we are not only fighting against hunger today, but also finding long-term solutions to end hunger in the future.	www.hungersolutions.org	1-888-711-1151
16	MINNESOTA HOME OWNERSHIP CENTER — Worried about your next house payment? Already missed one? Concerned about your interest rate changing? You're not alone. There is help.	www.hocmn.org	651-659-9336 or 1-866-462-6466
17	PORTICO HEALTHNET — Portico helps uninsured Minnesotans enroll in health insurance and navigate the complicated health care system. Our certified MNSure Navigators provide free, personalized assistance and help clients find the most affordable coverage for their family.	porticohealthnet.org	651-489-2273

ENROLLING IN HEALTH INSURANCE THROUGH MNsure

MNsure is Minnesota's health insurance marketplace where individuals and families can shop, compare and choose health insurance coverage that meets their needs.

MNsure is the only place you can apply for financial help to lower the cost of your monthly insurance premium and out-of-pocket costs. Most Minnesotans who enroll through MNsure qualify for financial help.

Visit www.MNsure.org for more information.



HOW TO GET COVERED

Visit www.MNsure.org to fill out an application for health coverage and to enroll in a plan. Before you apply, you can also compare plans on the website and see if you might be eligible to receive any financial help.

GET FREE HELP

MNsure provides free help with the application and enrollment process.

MNsure-Certified Assisters

MNsure has a statewide network of health insurance experts who can answer your questions and help you fill out an application and enroll in a health insurance plan.

To find one near you, go to www.MNsure.org/help.

MNsure Contact Center — 651-539-2099 (855-366-7873 outside the Twin Cities)

Agents are available Monday through Friday year-round, with extended evening and weekend hours during the annual open enrollment period.

ENROLLING IN HEALTH INSURANCE THROUGH MNsure *(CONTINUED)*

WHEN TO ENROLL

When you lose employer-sponsored health care coverage, you may qualify for a special enrollment period to get health care coverage through MNsure. Your special enrollment period begins 60 days before your last day of employer-sponsored coverage and continues for another 60 days after your last day of coverage. In your case, your last day of coverage through your employer is _____ (enter date given to you by your employer).

You can enroll in a plan at any time during your special enrollment period.

You **MUST** select a plan before the end of your special enrollment period.

- Enroll by the last day of the month your employer-sponsored coverage ends for your new coverage to begin the first day of the next month (date my coverage ends _____; first day of next month: _____)
- Enroll between the first and last day of the following month, for coverage to begin the first of the next month (first/last day of next month: _____, first day of following month: _____)
- Enroll between the first date of the next following month and 60 days from the date of loss of coverage for coverage the first of the next month.
- For example, if your last day of coverage is March 31:
 - If you select a plan by March 31, your new coverage would begin April 1.
 - If you select a plan on April 1 through April 30, your new coverage would begin May 1.
 - If you select a plan on May 1 through May 31, your new coverage would begin June 1.
 - If you don't select a plan by May 31, your special enrollment window will have expired.

***Note:** During the annual open enrollment period, which usually begins in November, all eligible Minnesotans can enroll in or change health plans through MNsure.*

ENROLLING IN HEALTH INSURANCE THROUGH MNsure *(CONTINUED)*

HAVE THIS INFORMATION AT HAND BEFORE YOU APPLY

- Your life event reason(s) for special enrollment
- Date the life event occurred
- Proof of the last day of your employer-sponsored health insurance coverage
- Social Security number for each person applying
- Date of birth for everyone in household (not just those applying)
- Driver's license, Tribal ID or other ID
- For non-citizens, Green Card or other immigration documents
- Most recent 1040 federal tax forms
- Two most recent pay stubs
- Documents for other sources of income (Social Security, unemployment, self-employment, etc.)
- W2 form or Employer Tax ID Number (EIN)
- Employer's address and contact information
- Information about any employer-sponsored health insurance available to each person applying

CHOOSING MNsure OR COBRA

COBRA (the Consolidated Omnibus Budget Reconciliation Act) coverage can be expensive. Coverage through MNsure typically has a lower monthly premium cost. MNsure is also the only place where you can qualify for financial help to lower your costs.

If you choose COBRA you can switch to a MNsure plan during the 60-day special enrollment period after your last day of employer-sponsored coverage. After your 60-day special enrollment period you will not be able to enroll in a plan through MNsure unless your employer was subsidizing your COBRA premium and that subsidy ends, your COBRA coverage is exhausted, or until the next open enrollment period. Losing your COBRA coverage because you do not pay your premiums does not qualify you for a special enrollment period. If you are eligible for Medical Assistance or MinnesotaCare, you can apply and enroll at any time.

DISLOCATED WORKER PROGRAM — FAQs

1. What exactly does this program do?

We have free services to help you find suitable reemployment. You will work one-on-one with a counselor to develop a plan which may include career planning and counseling; job search and placement services; counselor approved training and/or support services.

2. How is this different than the outplacement my company may be offering?

Our program does not have a time limit; we will be with you until you find your next job. Our program has money for training if you need to upgrade your current skills or learn new ones. Our program also has 'Support Service' money for emergency situations such as transportation, family care, a COBRA payment, etc.

3. What do I have to do next to get enrolled and get a counselor?

If at least 50 people from your layoff are interested in enrolling in the Dislocated Worker program, we create a committee of workers to choose which Dislocated Worker program service provider you would like to work with. Maybe you would like to be on a "Planning and Selection Committee" to help make that decision. If so, check "Yes" on the survey. Once the provider is selected, you will be notified on how/when/where to get enrolled in the program. If your layoff is under 50 people, you would need to contact one of our Dislocated Worker Program providers (<https://mn.gov/deed/programs-services/dislocated-worker/wioa-adult/providers/>) and ask to enroll. From there, the organization will direct you on next steps.

4. What if I don't know what I want to do next?

That's what's so great about this program; we'll help you figure it out. Your counselor can offer advice and assistance with career decision-making and how to develop job goals to find a suitable job. Your counselor also has assessment tools to learn more about your skills, abilities and interests to assist in looking at career paths.

DISLOCATED WORKER PROGRAM — FAQs *(CONTINUED)*

5. Great. I'm ready. Am I enrolled now that I completed that survey?

No, today is an information session for you. The survey you completed does not enroll you in the program. It is a means for us to learn more about your whole group so we can plan how to best meet your needs and to measure the interest of how many would enroll in the program.

6. When can I get started?

The process to select a provider won't take long; meanwhile anyone may use a CareerForce location for basic job search assistance. To find the nearest CareerForce location, go to: [CareerForce.MN.gov/locations](https://www.careerforce.mn.gov/locations).

7. I'm worried about health care. Does this help me become eligible for MNsure?

MNsure could be an option for you. Also, talk to your counselor, who may be able to help with Support Services or might be able to refer you to another program or agency that can help. Your counselor may have a list of more affordable health care options.

8. How does my involvement in the Dislocated Worker program affect my Unemployment Insurance benefits?

Unemployment Insurance expects you to actively look for a job UNLESS you are enrolled in full time training that is approved by your Dislocated Worker counselor. Attending classes and making satisfactory progress replaces the work search requirement for unemployment benefits. Approved training does not extend or change the amount or length of benefits on your account.

9. What if I get a job (part-time, full-time or interim)? How does that affect my participation in this program?

Many people work a part-time job (31 or fewer hours per week) or an interim job for additional income while using this program. Before accepting employment, check with your counselor to see if it will affect your eligibility for this program. To find out how a job will affect your unemployment benefits, visit the unemployment website at www.uimn.org or call 651-296-3644 or 1-877-898-9090 to speak to an Unemployment Insurance Representative.

DISLOCATED WORKER PROGRAM PAID TRAINING – FAQs

1. How do I find out if the Dislocated Worker program will pay for my training?

When you enroll in the Dislocated Worker program, a counselor will walk you through a reemployment plan and training may be part of your plan. Covered costs will be determined by your Dislocated Worker counselor.

2. Who approves the training?

Only your Dislocated Worker counselor can approve training.

3. I've already begun training. Can you pay for it?

The Dislocated Worker program cannot pay for training that has already occurred but speak with your counselor about costs moving forward.

4. A class I really want is coming up quickly. Do I really have to wait for a counselor?

Yes, but if you let the Dislocated Worker counselor know your timeline, they can often accelerate the process.

5. Do I have to go to school in Minnesota?

No, but your training plan needs to make sense for you, your commute, your subsequent job search, the labor market, cost, and other factors. Your Dislocated Worker counselor would still need to approve your out-of-state training plans.

6. I want to take an on-line class, will you pay for that?

Possibly, if it fits into your individual plan and your Dislocated Worker counselor approves it.

7. What happens if I'm going to school and get a good full-time job?

Many people take on part-time work as part of their plan, to help pay expenses while in school. If you get a substantial offer of a full-time job to replace the one you lost, your counselor will have advice on how to proceed. Sometimes a hiring employer will pick up the cost of remaining training if the credential is meaningful to them (it never hurts to ask!) In any case, our goal is to get you a job, and we'll help you achieve that goal. If you get a good, full-time job, you will not have to pay back any training money but we will not pay for any more classes going forward as you will have met the goal of the program.

DISLOCATED WORKER PROGRAM PAID TRAINING — FAQs

(CONTINUED)

8. *I already have a bachelor's degree. Does that mean I am not eligible for training?*

Your Dislocated Worker counselor will consider and discuss several factors with you: Do you need to upgrade your current skills? Are there jobs available utilizing your current skills? What does the Labor Market Information support? If training makes sense, your Dislocated Worker counselor may approve it.

9. *If I'm in training with the Dislocated Worker Program, how will it affect Unemployment Insurance benefits?*

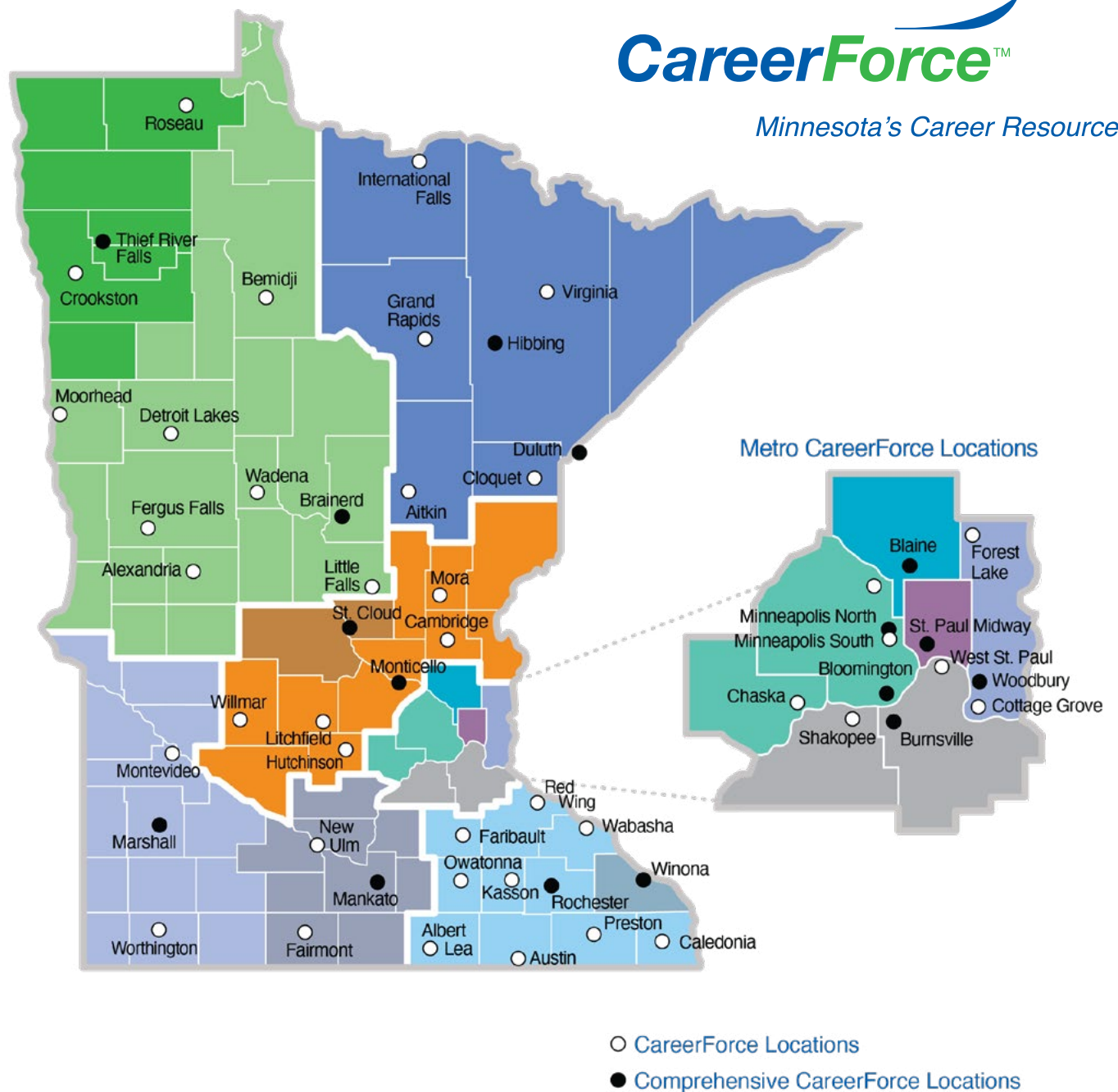
If you are in a full-time training program approved by the Dislocated Worker Program, you are not required to seek work while you are attending school. Attending classes and making satisfactory progress replaces the work search requirement for unemployment benefits. Approved training does not extend or change the amount or length of benefits on your account.



CareerForce locations in Minnesota



Minnesota's Career Resource



CareerForce offers locations statewide which provide knowledgeable staff to guide you. Each location provides essential tools to make your job search a success. Best of all, most services are free of charge. Find the CareerForce location nearest you: **[CareerForce.MN.gov/locations](https://www.careerforce.mn.gov/locations)**



The Minnesota Department of Employment and Economic Development is committed to equal opportunity, affirmative action, and diversity. For more information go to:

www.mn.gov/deed/about/what-guides-us/equal-opportunity

Upon request, this information can be made available in alternative formats for individuals with disabilities.